

# INSTRUCTION MANUAL

## Setting Remote Controller for the PMP Shutter APG-RM1

Edition №2 December, 19,2022 AIM0019-A00

Thank you very much for purchasing the setting remote controller for the PMP Shutter.  
Read this Instruction Manual carefully and thoroughly for the correct and optimum use of this product.  
Kindly keep this manual in a convenient place for quick reference.

### 1. OUTLINE

- This product is a setting remote controller dedicated for the PMP Shutter (APG-7 series).
- This product can change various settings for PMP Shutter (APG-7 series).
- AA alkaline batteries (2) are used as the power supply.
- This is a "CE" marked product.

### 2. CAUTIONS

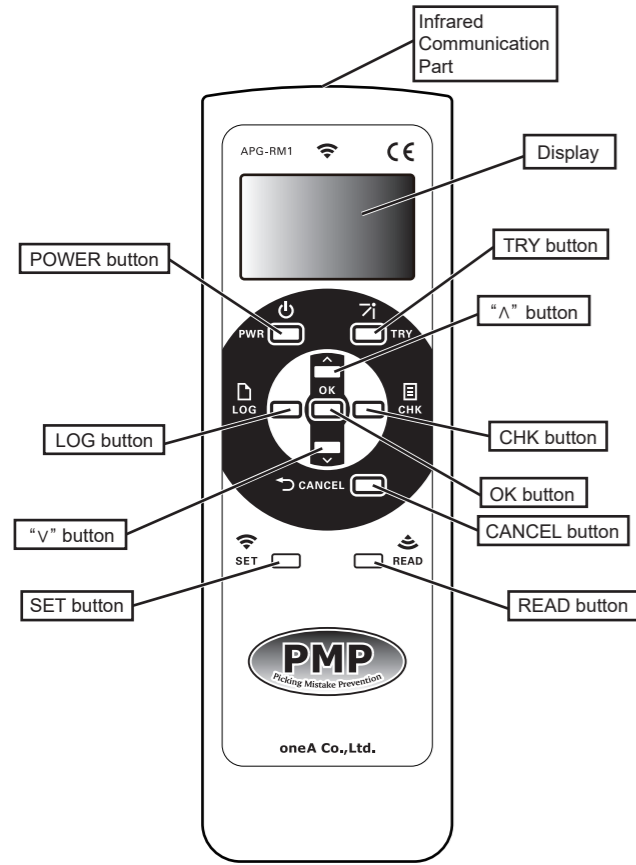
- Do not use detergent, etc., to clean the body of the product.  
Gently wipe off the dirt, for example, with a soft cloth that has been wet and then firmly wrung.
- Remove the batteries while not in use for long periods.

### 3. SPECIFICATIONS

Power Supply	AA alkaline batteries : 2pcs ☆1
Auto power off	Incorporated (1 minute)
Communication method	Infrared method
Setting distance	500mm MAX
Ambient temperature	0 to +45°C (No dew condensation)
Storage temperature	-20 to +60°C (No dew condensation) with no battery inserted
Ambient humidity	35~80%RH
Weight	150g (battery weight not included)

☆1 : Not included in product.

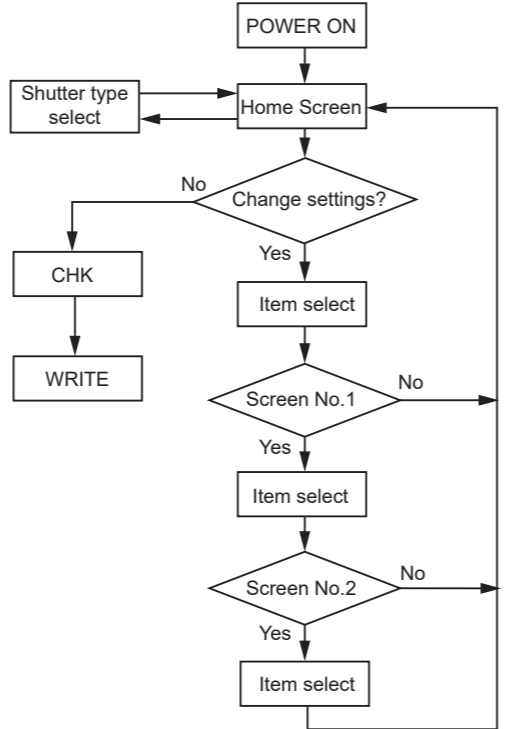
### 4. PART NAMES AND FUNCTIONS



Name	Function
Infrared Communication Part	The light emitting and receiving part for infrared communication.
Display	Shows the setting items.
POWER button	Turns ON/OFF the controller.
TRY button	Directly controls the shutter to open/close.
^ button	Adjustment key for setting input.
v button	Adjustment key for setting input.
LOG button	Shows the history of the setting transmitted from the controller. Can store up to 3 transmission datas. The data will be stored even when "Write NG" is shown.
CHK button	Shows the present setting set in the controller.
OK button	Confirms the setting content.
CANCEL button	Cancels the present setting and jumps to the previous page.
SET button	Writes the contents set with the remote controller to the PMP Shutter.
READ button	Reads the contents set in the PMP Shutter.

### 5. OPERATION METHOD

#### 5.1 Flowchart of the setting screen



#### 5.2 Shutter type select

To change the shutter's settings, the correct shutter type must be selected in the remote controller's setting.  
The shutter's version is shown on the nameplate of the shutter. Choose the matching shutter type.  
The shutter type is set to type B when the remote controller is turned on.

Version	Shutter type
Ver. 3.2	A
Ver. 4.0 or above	B

**Caution:** If the remote controller is turned off after choosing shutter type A, the shutter type will be set back to type B.

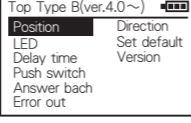
**Caution:** If the wrong shutter type is selected, the shutter may read in a false shutter setting.

#### 5.3 Various settings

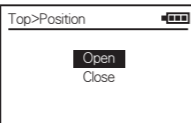
##### Setting example

##### Shutter opening/closing angle setting

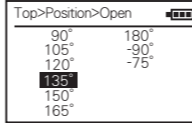
Setting of the shutter's opening/closing position.  
• Press the PWR button and open the TOP screen.



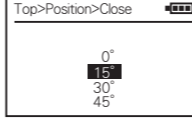
• Choose "Position" with the ^ or v button and press the ENT button. Screen No.1 will be displayed.



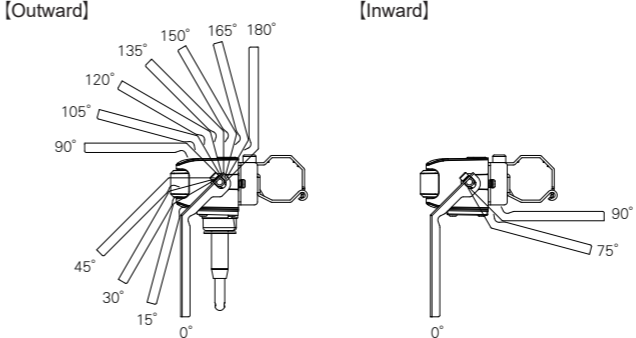
• To change the shutter's opening position, choose "Open" and press the ENT button. Screen No.2 will be displayed.



• To change the shutter's closing position, choose "Close" and press the ENT button. Screen No.2 will be displayed.



• Choose the angle and press the ENT button. The position will be set.



#### Other settings

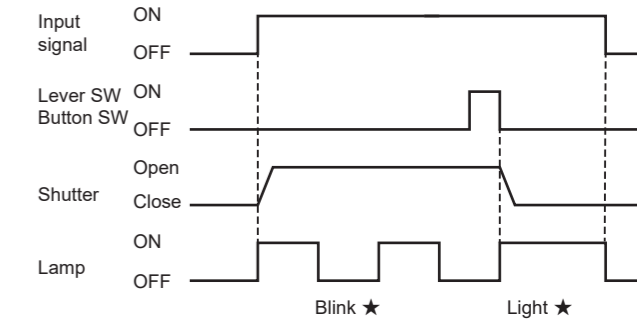
To change other settings, see the table below and follow the same steps as the setting example.

Setting items	TOP Screen	Screen No.1	Screen No.2	Contents	Shutter type
Shutter opening/closing angle setting	Position	Open	90° 180° 105° -90° 120° -75° 135° 150° 165°	-90° , -75° can be set only when the "Direction " is set to " Reverse " ☆4	TYPE A, B
		Close	0° 15° 30° 45°	0° will be automatically set when " Direction " is set to " Reverse " ☆4	
Lamp setting	LED	Light	ON Blink1 Blink2 Blink3 OFF	Light Blink Double blink Triple blink Off	TYPE A, B
		Color	Green Blue Yellow Red Purple Cyan	Green Blue Yellow Red Purple Cyan	
		Error	Red OFF	Red at error Off at error	
		Delay time	0sec 5.0sec 0.5sec 7.0sec 1.0sec 10.0sec 2.0sec 3.0sec 4.0sec	The time until the shutter closes after the input signal is turned off.	
Push switch setting	Push switch	OFF ON	☆3	Disable Enable	TYPE A, B
Answer back mode setting ☆1	Answer back	OFF ON		Disable Enable	TYPE A, B
Error out setting ☆2	Error Out	OFF ON		Disable Enable	TYPE A, B
Shutter opening direction	Direction	Correct Reverse		Outward Inward	TYPE A 1
Set to default setting	Set default	EXE Cancel		☆5	TYPE A, B
PICC Mode ☆6	PICC	OFF ON		Disable Enable	TYPE B 2
Shutter Type	Shutter Type	A(ver.3.2) B(ver.4.0)~		For ver.3.2 For ver.4.0 or later	

The setting shown in   are the default settings.

\*1 This setting is not required for TYPE B.  
\*2 TYPE A does not have the function of PICC Mode.

#### ☆1 : Answer Back Mode



★ If "LED>Light>ON" is set, the LED Lights up with the input signal, and blink after the lever(button) is turned on.

The shutter opens and the lamp blinks(turns on) with the incoming signal.  
After the lever(button) is pushed, the shutter closes and the lamp turns on(blinks).  
The lamp turns off when the input signal is off.

#### ☆2 : ERROR OUT MODE

When the shutter is forced to be opened when the incoming signal is off and the shutter is closed, the Error output will become on. The Error output turns off when the shutter is closed.

☆3 : The default setting is shown below.  
Lever switch type : Disable  
Push switch type : Enable

☆4 : Shutter opening angle -90° , -75° can only be set when the shutter opening direction is set to Reverse. (Only for shutter type A)

☆5 : The setting will be set to default by selecting EXE and pressing the ENT button. The default settings are shown below.

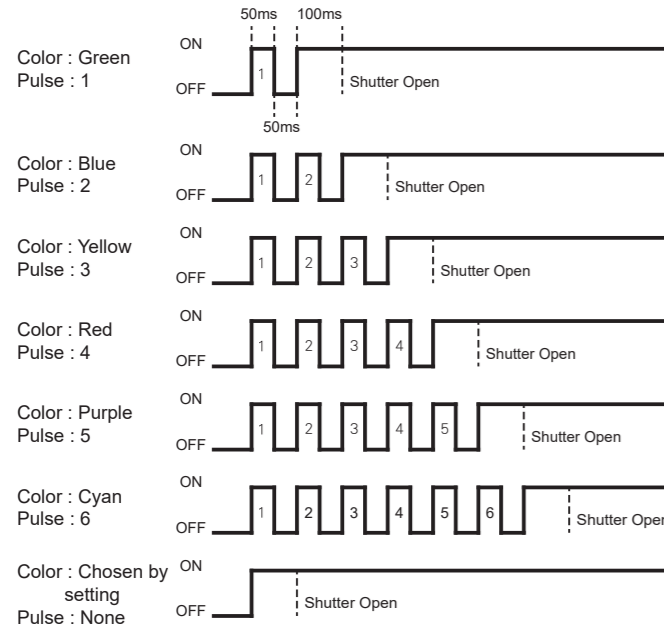
Shutter opening angle	180°	Delay time	1 sec
Shutter closing angle	0°	Push SW	☆5
Lamp action	Blink	Answer back mode	Disable
Lamp color	Green	Error out mode	Disable
Lamp color at error	Red	Shutter opening direction	Outward

**Caution:** If the shutter's opening position is set to -90° or -75° when the opening direction is set outwards (Correct), or the opening position is set to 90° to 180° when the opening direction is set inwards(Reverse), "Error" will be shown on the display by writing into the PMP shutter. The closing position will automatically be set to 0° when the "Direction" is set to "Reverse" .

#### ☆6 : PICC Mode

When PICC Mode is enabled, the lighting color of the lamp will be able to be changed by the input signal.

The shutter opens with a long input(100ms or longer). If there are 50ms length inputs before the long input, the number of them are counted to decide the lighting color of the lamp.



- The pulse signal must be in the range of 50ms  $\pm$ 10% for both ON and OFF. If the signal is out of this range, the input will not operate as a 50ms input.
- When the input is ON for longer than 100ms, the shutter will start the opening operation.
- When the input is OFF for longer than 200ms after the 50ms signal, the signal count will be reset.
- If there are no 50ms pulse signals before the long input, the lighting color will be decided by the color set with the remote controller.
- When the shutter is closed, the signal count will be reset. To light the lamp with the same color, the same number of pulse signals are needed before the long input.

**Caution: Due to the environment around the device, the disturbance light may affect to the number of pulse signals and change the light up color.**

#### 5.4 Writing

When the settings are done, keep the ray communication window near to the PMP shutter and press the SET button. If "Write OK" shows, the setting is done properly. If "Write NG" shows, check the PMP shutter's power supply or the setting details.

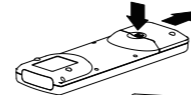
**Caution: If the SET button is pressed at a far distance from the PMP shutter when multiple numbers of shutters are placed close together, it may write in the setting to more than one shutter. Be sure to write in from less than 50mm away from the shutter.**

#### 5.5 Reading

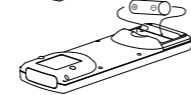
Keep the ray communication window near to the PMP shutter and press "Read". By pressing the "OK" button after "Read OK" is shown on the display, It will be easier to change a part of the setting that is already set in the shutter.

## 6.INSTALLATION METHOD OF ALKALINE BATTERIES

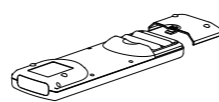
1. Slide the battery cover on the back side of the body to remove the cover.



2. Pay attention to the directions, and install the AA alkaline batteries into the battery box.



3. Slide the battery cover onto the body to attach the cover.



**Caution: Do not use different types of batteries or combine old and new batteries.**

**Caution: The setting data will be reset when the battery runs out or when the battery is removed. Be sure to verify the setting or follow the steps of "5.5 Reading" before operating.**

## 7. GUARANTEE PERIOD

The period of the guarantee is 1 year from the customer's purchase.

## 8. THE EXTENT OF SERVICE

- The price of our products does not include the costs for services such as the dispatching of engineers. Please inquire with our sales contact if these are required.

The details above are written with the assumption that the transaction and use is within Japan. Please consult our sales contact separately with any requests or questions regarding matters such as the specifications, guarantee or service for transactions or use outside of Japan.

### Inquiries

oneA Co.,Ltd.

Arrow Company,3-30-20 Hanaten-Higashi, Tsurumi-ku, Osaka 538-0044

TEL: +81.6.6962.8111 FAX: +81.6.6962.8885 URL <http://www.one-a.co.jp>